

EXPLOSION PROOF ATEX CERTIFIED FANS

RKX 500x250 D3

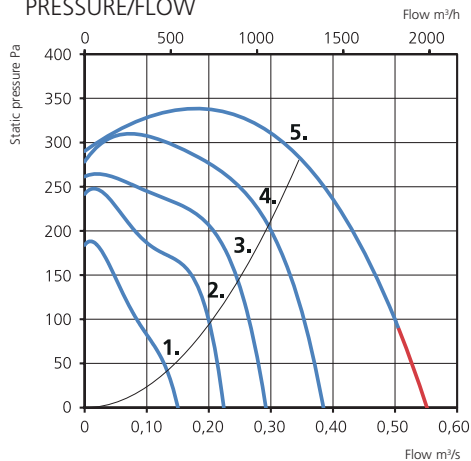
7730016

- Duct fan with rectangular connections.
- is a refinement of and a safe choice for numerous applications within the industry.
- The fan is intended to transport gas in explosive environment.
- The fan can only be used in zone 1 and 2.
- The ATEX fan is not subject to the ErP directive.
- Impeller with forward curved blades.
- The external rotor AC motor has maintenance-free sealed ball-bearings.
- External motor protection and junction box are available as accessories.

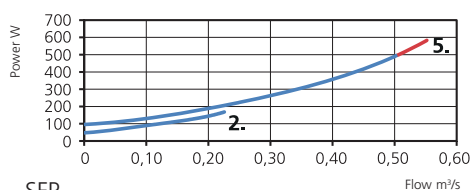
- For speed control a transformer can be connected.
- Fan housing is manufactured from galvanized sheet steel with a nonsparking inlet cone made from copper.
- The fan is certified according to directive 2014/34/ and quality factor G 6.3.
- Compliance with the standards EN 60079-0 + A11: 2013 and EN 14986: 2007.
- The fan is intended to be installed indoors in a duct system.
- Swing-out design to simplify maintenance and cleaning of the impeller.



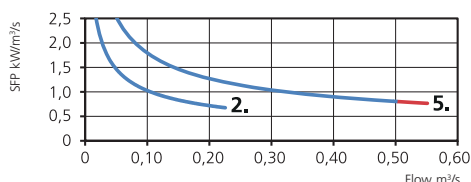
PRESSURE/FLOW



POWER/FLOW



SFP



TECHNICAL DATA

Voltage	400 V
Frequency	50 Hz
Phase	3 ~
Current	0.85 A
Power	490 W
Speed	1160 r.p.m.
Capacitor	-
Max. temp of transported air	40 °C
Sound pressure level, 3 m	51 dB(A)
Weight	18.0 kg
Wiring diagram	4040115

ACCESSORIES

- Junction Box ATEX
- ATEX Thermal contact relay U-EK230E

SOUND DATA

	L_{WA} tot dB (A)	63	125	250	500	1K	2K	4K	8K
4.Surrounding 400 V	58	36	46	54	50	52	47	42	36
4.Outlet 400 V	77	63	65	68	68	71	69	69	63
4.Inlet 400 V	72	60	67	67	57	60	61	60	54
3.Inlet 240 V	70	58	64	65	55	57	59	58	51
2.Inlet 185 V	67	57	62	63	53	55	57	55	48
1.Inlet 145 V	63	54	58	58	51	51	53	50	41

TRANSFORMER STEPS

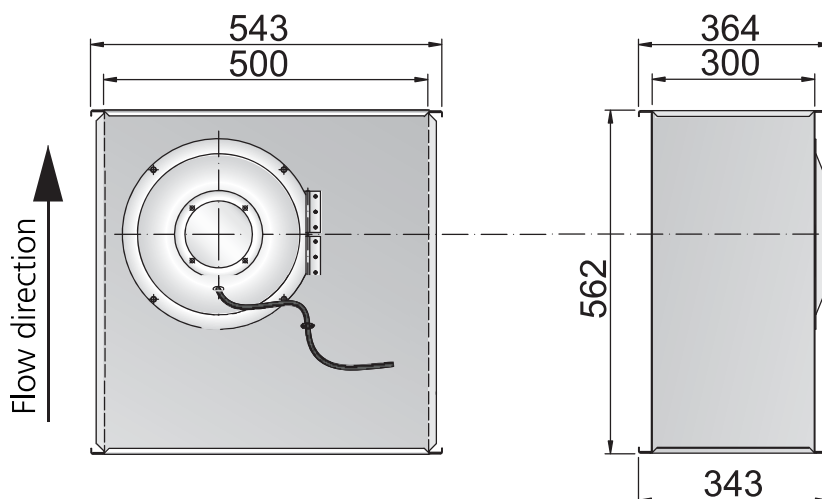
1. 145 V 2. 185 V 3. 240 V 4. 400 V

MORE INFORMATION



Find out the latest updated information about this product by visiting www.ostberg.com or by scanning QR code.

DIMENSIONS (mm)



RKX 500x300 B3

7730017



- Duct fan with rectangular connections.
- is a refinement of and a safe choice for numerous applications within the industry.
- The fan is intended to transport gas in explosive environment.
- The fan can only be used in zone 1 and 2.
- The ATEX fan is not subject to the ErP directive.
- Impeller with forward curved blades.
- The external rotor AC motor has maintenance-free sealed ball-bearings.
- External motor protection and junction box are available as accessories.

- For speed control a transformer can be connected.
- Fan housing is manufactured from galvanized sheet steel with a nonsparking inlet cone made from copper.
- The fan is certified according to directive 2014/34/ and quality factor G 6.3.
- Compliance with the standards EN 60079-0 + A11: 2013 and EN 14986: 2007.
- The fan is intended to be installed indoors in a duct system.
- Swing-out design to simplify maintenance and cleaning of the impeller.

ACCESSORIES

- Junction Box ATEX
- ATEX Thermal contact relay U-EK230E

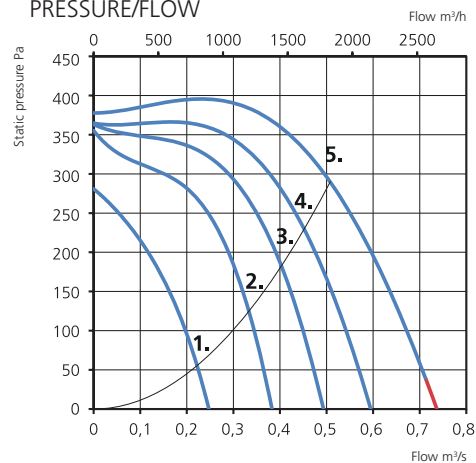
TECHNICAL DATA

Voltage	400 V
Frequency	50 Hz
Phase	3 ~
Current	1.80 A
Power	900 W
Speed	1360 r.p.m.
Capacitor	-
Max. temp of transported air	40 °C
Sound pressure level, 3 m	57 dB(A)
Weight	21.4 kg
Wiring diagram	4040115

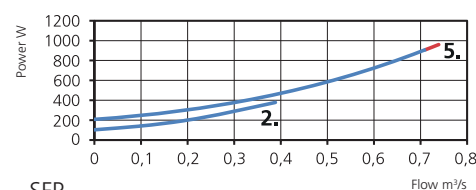
SOUND DATA

	L_{wa} tot dB (A)	63	125	250	500	1K	2K	4K	8K
4.Surrounding 400 V	60	42	48	54	53	54	51	47	40
4.Outlet 400 V	82	61	67	70	71	77	75	74	69
4.Inlet 400 V	77	59	67	66	62	71	71	68	64
3.Inlet 240 V	74	57	64	64	61	67	68	65	60
2.Inlet 185 V	69	53	61	60	58	62	64	61	54
1.Inlet 145 V	60	46	52	53	51	52	54	48	37

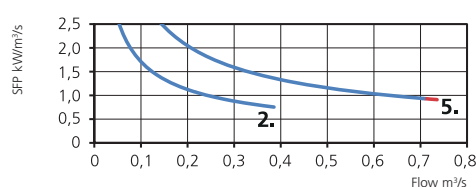
PRESSURE/FLOW



POWER/FLOW



SFP



MORE INFORMATION

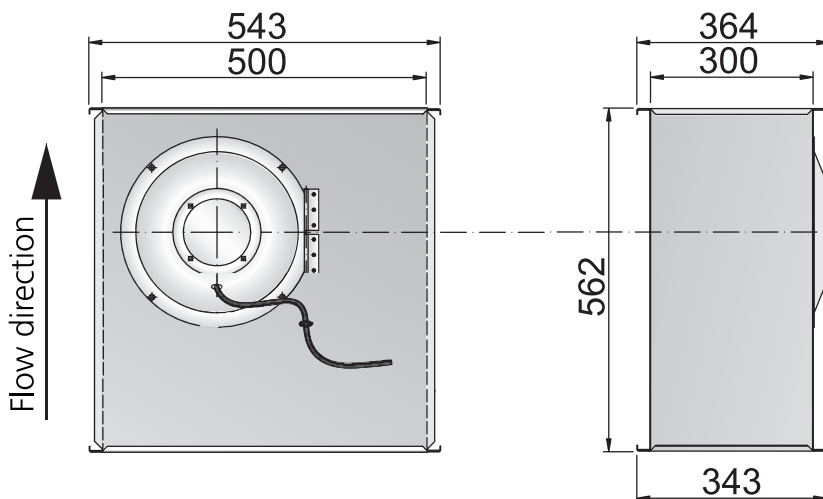


Find out the latest updated information about this product by visiting www.ostberg.com or by scanning QR code.

TRANSFORMER STEPS

1. 145 V 2. 185 V 3. 240 V 5. 400 V

DIMENSIONS (mm)



ATEX FANS

EXPLOSION PROOF ATEX CERTIFIED FANS

RKX 600x300 F3

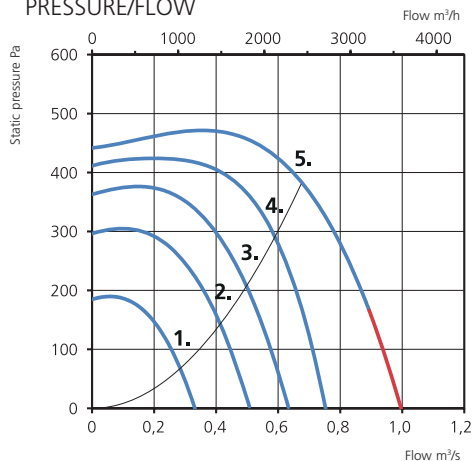
7730018

- Duct fan with rectangular connections.
- is a refinement of and a safe choice for numerous applications within the industry.
- The fan is intended to transport gas in explosive environment.
- The fan can only be used in zone 1 and 2.
- The ATEX fan is not subject to the ErP directive.
- Impeller with forward curved blades.
- The external rotor AC motor has maintenance-free sealed ball-bearings.
- External motor protection and junction box are available as accessories.

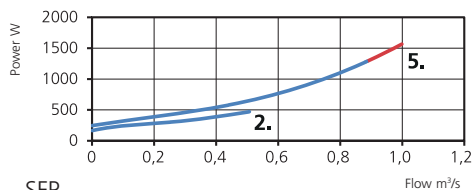
- For speed control a transformer can be connected.
- Fan housing is manufactured from galvanized sheet steel with a nonsparking inlet cone made from copper.
- The fan is certified according to directive 2014/34/ and quality factor G 6.3.
- Compliance with the standards EN 60079-0 + A11: 2013 and EN 14986: 2007.
- The fan is intended to be installed indoors in a duct system.
- Swing-out design to simplify maintenance and cleaning of the impeller.



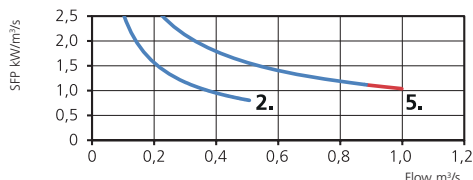
PRESSURE/FLOW



POWER/FLOW



SFP



TECHNICAL DATA

Voltage	400 V
Frequency	50 Hz
Phase	3 ~
Current	2.71 A
Power	1590 W
Speed	1240 r.p.m.
Capacitor	-
Max. temp of transported air	40 °C
Sound pressure level, 3 m	59 dB(A)
Weight	34.8 kg
Wiring diagram	4040003

ACCESSORIES

- Junction Box ATEX
- ATEX Thermal contact relay U-EK230E

SOUND DATA

	L_{WA} tot dB (A)	63	125	250	500	1K	2K	4K	8K
5.Surrounding 400 V	66	47	58	61	58	59	55	53	47
5.Outlet 400 V	86	69	74	75	75	81	80	78	73
5.Inlet 400 V	81	65	74	72	67	74	75	72	68
4.Inlet 240 V	77	62	69	69	65	70	72	68	63
3.Inlet 185 V	74	60	66	65	62	66	68	64	58
2.Inlet 145 V	69	56	62	61	59	61	63	59	52
1.Inlet 95 V	61	49	55	53	51	51	54	48	36

TRANSFORMER STEPS

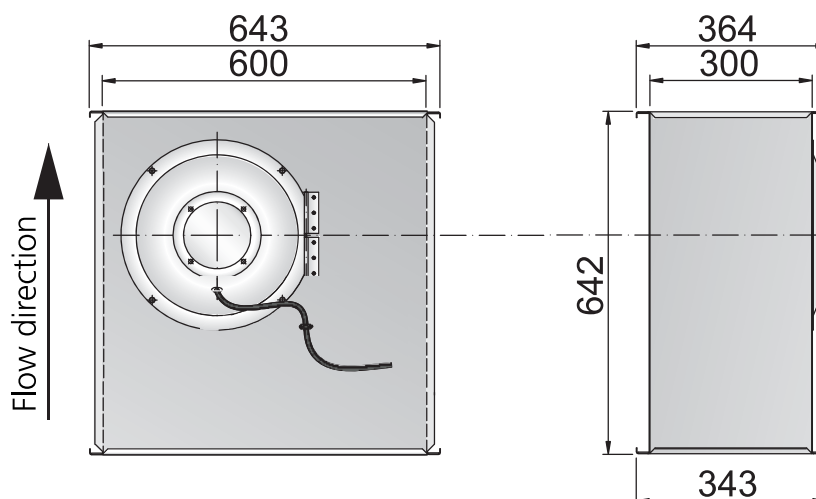
1. 95 V 2. 145 V 3. 185 V 4. 240 V 5. 400 V

MORE INFORMATION



Find out the latest updated information about this product by visiting www.ostberg.com or by scanning QR code.

DIMENSIONS (mm)



RKX 600x350 E3

7730019



- Duct fan with rectangular connections.
- is a refinement of and a safe choice for numerous applications within the industry.
- The fan is intended to transport gas in explosive environment.
- The fan can only be used in zone 1 and 2.
- The ATEX fan is not subject to the ErP directive.
- Impeller with forward curved blades.
- The external rotor AC motor has maintenance-free sealed ball-bearings.
- External motor protection and junction box are available as accessories.

- For speed control a transformer can be connected.
- Fan housing is manufactured from galvanized sheet steel with a nonsparking inlet cone made from copper.
- The fan is certified according to directive 2014/34/ and quality factor G 6.3.
- Compliance with the standards EN 60079-0 + A11: 2013 and EN 14986: 2007.
- The fan is intended to be installed indoors in a duct system.
- Swing-out design to simplify maintenance and cleaning of the impeller.

ACCESSORIES

- Junction Box ATEX
- ATEX Thermal contact relay U-EK230E

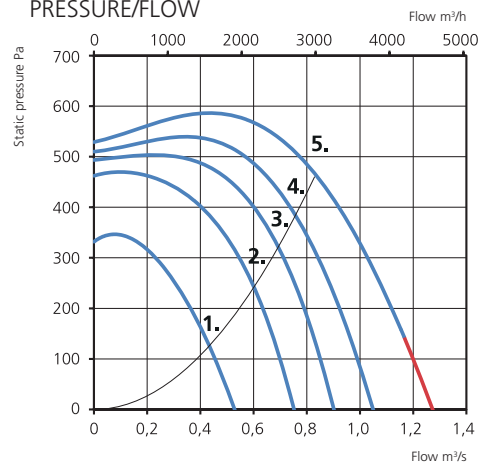
TECHNICAL DATA

Voltage	400 V
Frequency	50 Hz
Phase	3 ~
Current	4.14 A
Power	2440 W
Speed	1370 r.p.m.
Capacitor	-
Max. temp of transported air	40 °C
Sound pressure level, 3 m	61 dB(A)
Weight	43 kg
Wiring diagram	4040003

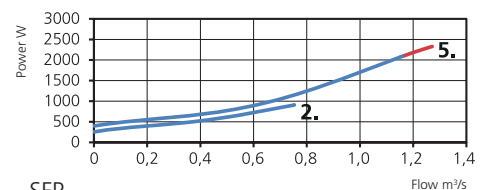
SOUND DATA

	L_{WA} tot dB (A)	63	125	250	500	1K	2K	4K	8K
5.Surrounding 400 V	68	46	57	62	60	65	58	56	52
5.Outlet 400 V	91	66	74	76	79	87	84	82	77
5.Inlet 400 V	84	65	72	71	73	79	78	76	72
4.Inlet 240 V	82	64	71	69	71	77	76	73	70
3.Inlet 185 V	79	62	69	68	69	74	73	71	67
2.Inlet 145 V	76	59	66	65	67	70	70	68	62
1.Inlet 95 V	68	54	60	59	61	61	62	60	50

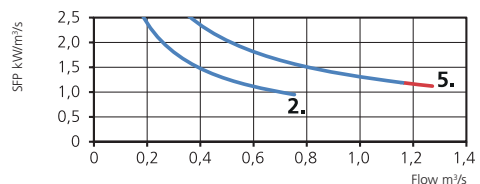
PRESSURE/FLOW



POWER/FLOW



SFP



MORE INFORMATION

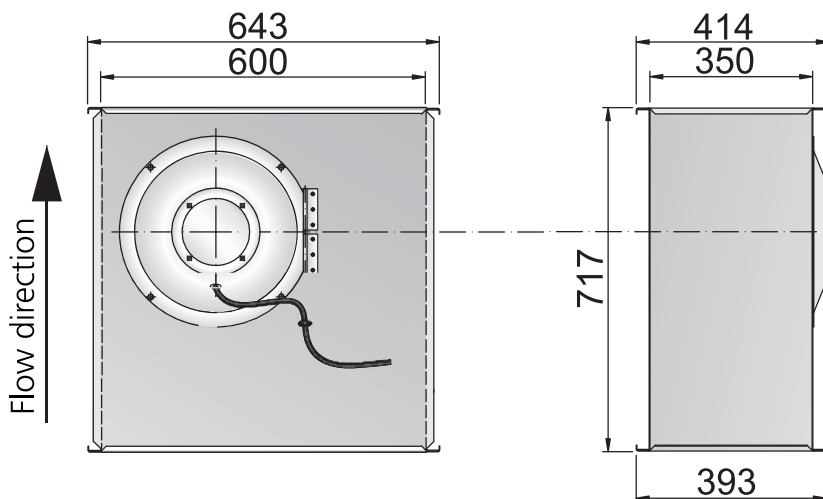


Find out the latest updated information about this product by visiting www.ostberg.com or by scanning QR code.

TRANSFORMER STEPS

1. 95 V 2. 145 V 3. 185 V 4. 240 V 5. 400 V

DIMENSIONS (mm)



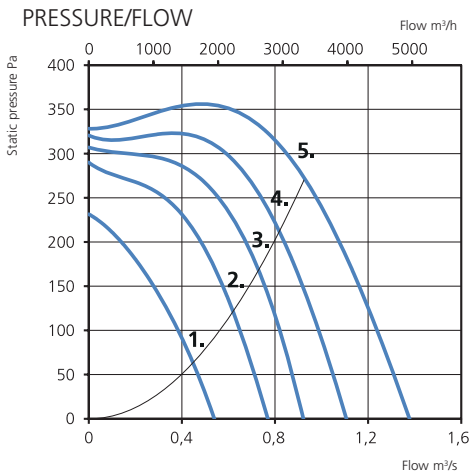
ATEX FANS

EXPLOSION PROOF ATEX CERTIFIED FANS

RKX 700x400 B3

7730020

- Duct fan with rectangular connections.
- is a refinement of and a safe choice for numerous applications within the industry.
- The fan is intended to transport gas in explosive environment.
- The fan can only be used in zone 1 and 2.
- The ATEX fan is not subject to the ErP directive.
- Impeller with forward curved blades.
- The external rotor AC motor has maintenance-free sealed ball-bearings.
- External motor protection and junction box are available as accessories.
- For speed control a transformer can be connected.
- Fan housing is manufactured from galvanized sheet steel with a nonsparking inlet cone made from copper.
- The fan is certified according to directive 2014/34/ and quality factor G 6.3.
- Compliance with the standards EN 60079-0 + A11: 2013 and EN 14986: 2007.
- The fan is intended to be installed indoors in a duct system.
- Swing-out design to simplify maintenance and cleaning of the impeller.

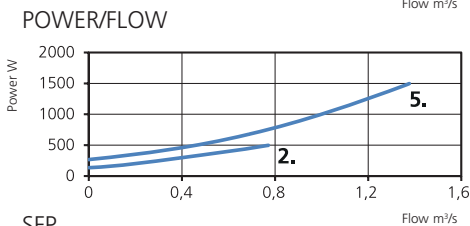


TECHNICAL DATA

Voltage	400 V
Frequency	50 Hz
Phase	3 ~
Current	3.68 A
Power	1670 W
Speed	860 r.p.m.
Capacitor	-
Max. temp of transported air	40 °C
Sound pressure level, 3 m	57 dB(A)
Weight	48.1 kg
Wiring diagram	4040003

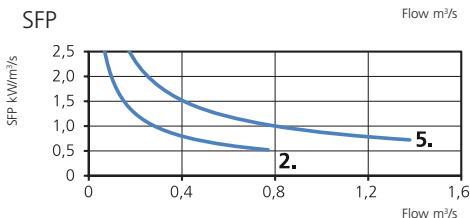
ACCESSORIES

- ATEX Thermal contact relay U-EK230E
- Junction Box ATEX



SOUND DATA

	L_{wa} tot dB (A)	63	125	250	500	1K	2K	4K	8K
5.Surrounding 400 V	64	48	56	57	59	58	54	49	45
5.Outlet 400 V	77	63	69	66	66	72	70	69	63
5.Inlet 400 V	77	64	68	66	65	71	70	69	63
4.Inlet 240 V	75	62	66	64	64	69	67	67	60
3.Inlet 185 V	72	59	63	62	62	66	65	64	56
2.Inlet 145 V	69	56	60	59	59	63	61	60	51
1.Inlet 95 V	61	49	52	53	51	55	54	51	38



TRANSFORMER STEPS

1. 95 V 2. 145 V 3. 185 V 4. 240 V 5. 400 V

MORE INFORMATION



Find out the latest updated information about this product by visiting www.ostberg.com or by scanning QR code.

DIMENSIONS (mm)

